

INDUSTRY FIRST

Introducing the

ULTIMATE CLAMP SYSTEM

A new innovative glass clamp system that doesn't require any glass cut outs! Providing you with hassle free fitting and adjustment; no more expensive glass cutouts & more!

Danmac continues to be a leader in new product development, endeavouring to be at the forefront of design and innovation.



ULTIMATE CLAMP SYSTEM

An industry first, Danmac's Ultimate Clamp System revolutionises the way a shower screen is fitted, providing a more cost effective and timing saving method!

SPECIFICATIONS

INNOVATIVE

An innovative glass clamp system that doesn't require any glass cut outs! With only a single hole top and bottom of the door glass, the pivot pin is now incorporated on the clamp itself which eliminates cutouts in glass, making it cost and time effective. And that equals savings!

PREMIUM QUALITY

The Ultimate Clamp System is manufactured from the highest quality forged brass, stainless steel screws and a chrome plated nylon pivot, making it more durable with less parts! Comes in 3 colours for better colour matching.

ADJUSTABLE

A Single hole in the glass provides hassle free fitting and adjustment. A dual fixed adjustable pivot base with 2mm adjustment each side of centre.

FLEXIBLE

The Ultimate Clamp can be ordered with the option of becoming a dual action 90 deg opening in both directions!

GLASS THICKNESS

Designed to fit 6mm glass.

LOCKING SYSTEM

Magnetic Door Stop:

Swings both ways: code DMDSBW

Swing out only: code DMDSOO

Provides easier closing and alignment of doors.

Australian Design Registration Number: 349371

Colours Available:



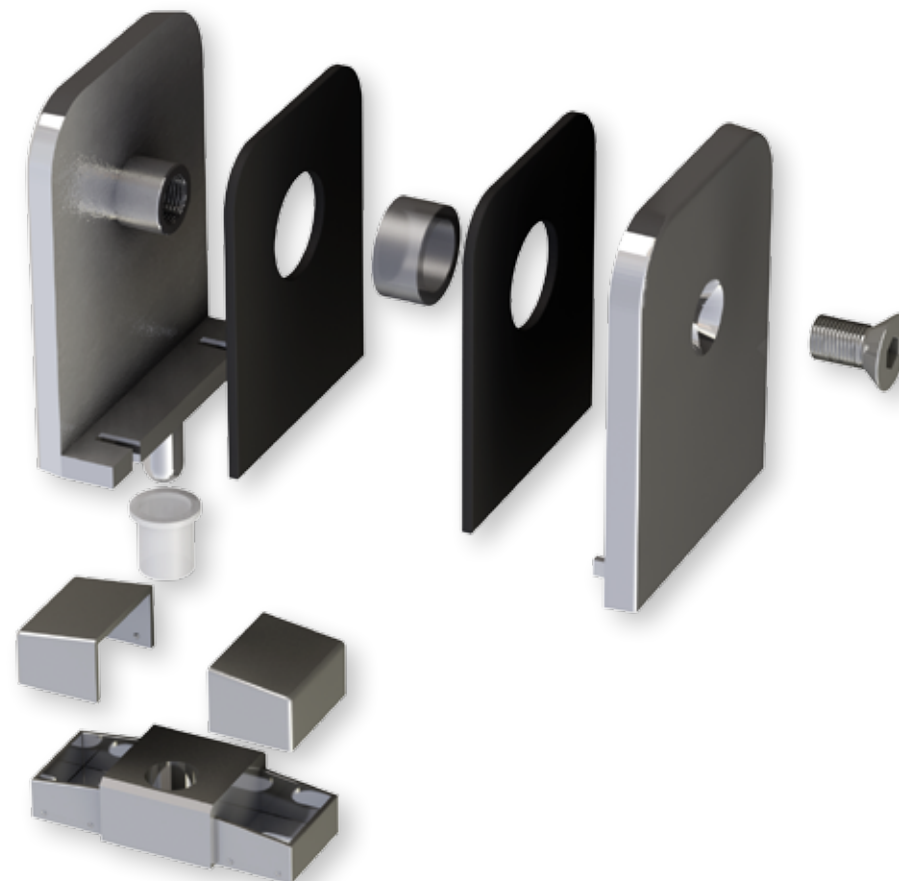
Pearl White



Chrome



Satin



To order or for more information call:

1300 139 706

visit: danmac.com.au

99 Frankston Gardens Drive,
Carrum Downs Vic 3201

Tel: (03) 9775 1223 Fax: (03) 9775 1445

FEATURES & BENEFITS