

ultimate

SILL-LESS PIVOT CLAMP SYSTEM

taking semi-frameless shower screens to the next level



Patent Pending 2019903784



Innovative Sill-less pivot door system

Minimalist sleek design

Hassle Free fitting and adjustment

Patented Design



excellence. innovation. custom design.

ultimate

SILL-LESS PIVOT CLAMP SYSTEM

specifications

PREMIUM QUALITY

The Ultimate Clamp System is manufactured from the highest quality forged brass, stainless steel screws and chrome plated, making it more durable with less parts! Available in four colours for better colour matching.

INNOVATIVE

An innovative glass clamp system that doesn't require any glass cut outs! With only a single hole top and bottom of the door glass, the pivot pin is incorporated in the clamp itself which eliminates cutouts in glass, making it cost and time effective.

ADJUSTABLE

A Single hole in the glass provides hassle free fitting and adjustment.

FLEXIBLE

The Ultimate Clamp can be ordered with the option of becoming a dual action 90 deg opening in both directions or swing out only. Works with all Danmac perimeter frame options

GLASS THICKNESS

Designed to fit 6mm glass.

LOCKING SYSTEM

Magnetic Door closure:

Swings both ways

Swing out only

Provides easier closing and alignment of doors.

Australian Design Registration Number: 349371

Patend Pending: 2019903784

SILL-LESS CLAMP SYSTEM

No mechanical fixings to the floor

Unique fixing system

The pivot is secured to the floor by the fix panel glass

Up to 950mm wide doors

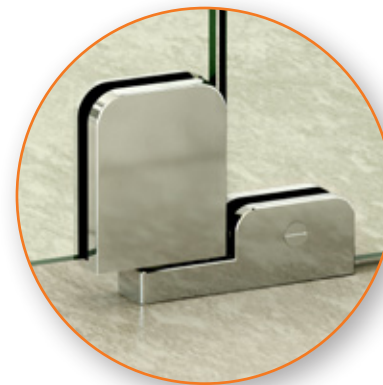
Wheel Chair Accessible.

17mm clearance under the door

HANDLES

Wide range of pull knobs and handles to choose from.

Go to our website for further options. (Handle in image: DK201)



Patent Pending 2019903784

Colours Available:



Pearl White



Polished Chrome



Satin



Matte Black

Your Local Distributor:



excellence. innovation. custom design.

To order or for more information call:

1300 139 706

99 Frankston Gardens Drive,
Carrum Downs Vic 3201

Tel: (03) 9775 1223 Fax: (03) 9775 1445

visit: danmac.com.au

ALSPEC BRANCHES

Melbourne • Sydney • Newcastle
Brisbane • Cairns • Townsville
Darwin • Adelaide • Western Australia

Ph: **1300-ALSPEC**
[257732]